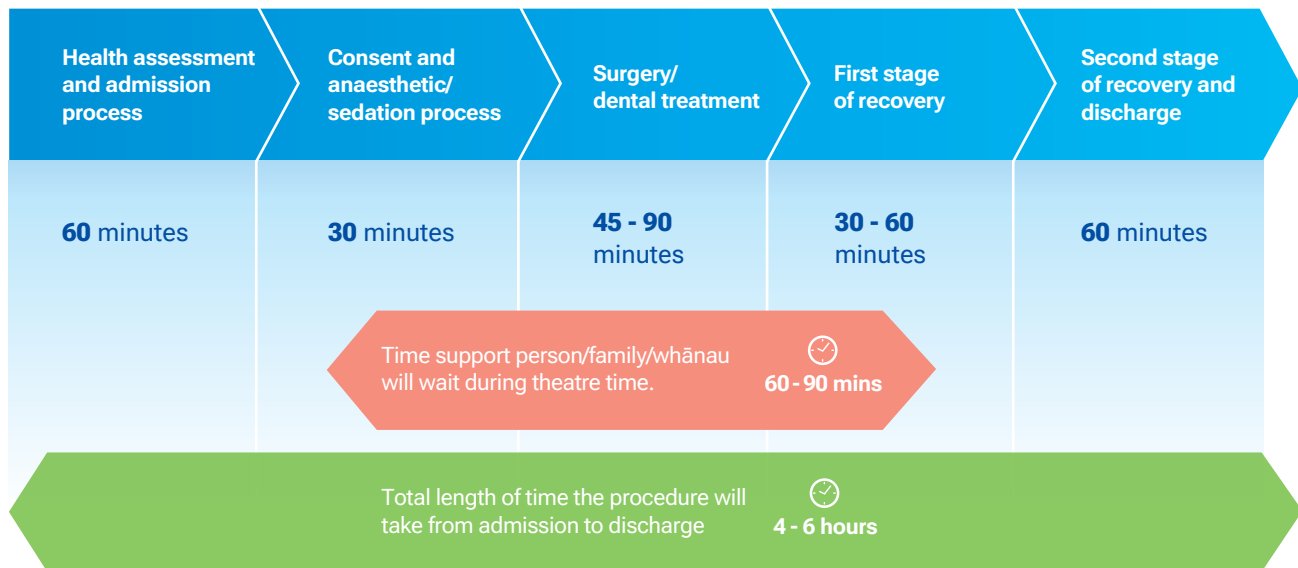


Appointment time:

On the day of your appointment, make sure that you keep the whole day free. The time in your admission pack is the time we need you to arrive at the health facility. You may have to wait for a while before surgery but staff will keep you informed.

We appreciate and understand that this may be difficult, especially if you or your tamariki/children have not eaten. Although we try to minimise the wait, it can be hard to estimate how long operations will take.



Note: Times are approximate and may change on the day

Admission and consent:

On arrival at the health facility you will be shown to the waiting area where you will be introduced to one of the nurses on the team. They will admit you for your surgery and after that you will be seen by your surgeon and anaesthetist. They will discuss your surgery and anaesthetic with you, and give you the opportunity to ask any questions.

Once this is done they will ask you to sign the consent form which means surgery can then go ahead.

Surgery:

The clinical team will come and get you when it is time for your surgery. A support person is welcome to accompany you onto the surgical unit.

Parents or guardians may stay with their tamaiti/child onboard while they go to sleep, but once they are asleep, the caregiver present will be asked to leave. This is to ensure the safety of both the patient and the caregiver during surgery and also ensures there is enough space for the clinical team to complete the operation safely.