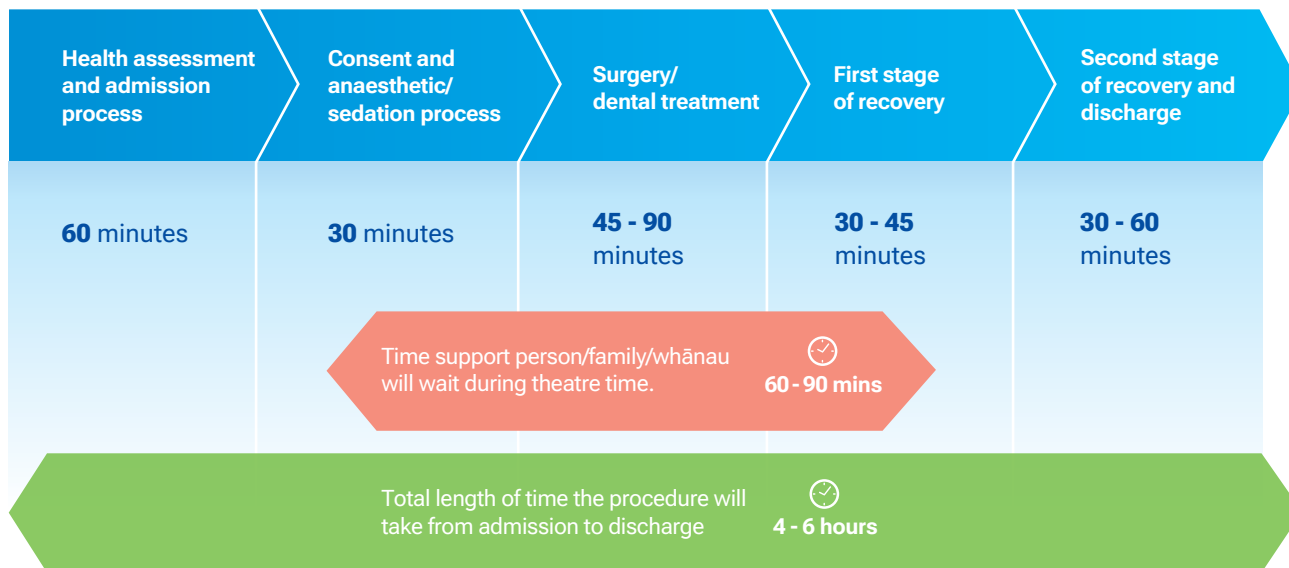


# How long can you expect your procedure/treatment to take?



*Note: Times are approximate and may change on the day*



## Waiting time

The time specified in your admission pack is the time you need to arrive at the hospital/medical centre.

Please be aware that there will be a waiting period before your surgery.

We appreciate and understand that this may be difficult, especially if you or your tamariki/children have not eaten. Although we try to minimise the wait, it can be hard to estimate how long operations will take.

We suggest you bring a book or activities for your tamariki/children. Please feel free to ask kaimahi/staff for a progress update on the day.